

JOHNSON BUILDING

PROJECT SNAPSHOT:

Description:
Canopies, stairwells,
railings, specialty metal
fabrication

Owner:
Johnson Bank

General Contractor:
Mortenson

Architect:
Eppstein Uhen Architects

Engineer:
Pierce Engineers, Inc.

Manhours:
14,400

Completed:
2002



Photo Courtesy of Johnson Bank

The environmentally-friendly Johnson Building houses three businesses and overlooks Lake Michigan. The building was completed in 2002.

GRUNAU METALS MEETS CHALLENGES, AGGRESSIVE SCHEDULE FOR JOHNSON BUILDING

PROJECT OVERVIEW

Grunau Metals was asked to build stair towers, an ornate handrail system, exterior ornamental glass-top canopies and other specialty metals for the Johnson Building.

SITUATION

When Johnson Bank began the construction of an office building to house three separate family enterprises in Racine, Wis., they envisioned an architecturally distinct, environmentally-friendly building to house its many services. Grunau Metals contributed to the building's aesthetic design with an architectural-class stairwell built in a box-shaped design. However, the stair towers proved challenging because the structural components that needed to be connected to the existing pre-cast concrete conflicted with the glass stair towers. Some redesign of the structural support system was required.

In addition, the metals team had to avoid hitting suspension cables encapsulated in the concrete before connecting their structural metals work. The entire project was on an aggressive schedule, so the general contractor X-rayed the concrete at night so the metals team could anchor their metal work in it the next morning. Grunau Metals constructed four, five-story main stair towers to connect the building's three wings. The team worked on the stair towers in all three wings simultaneously, allowing the other trades vertical movement. Each staircase featured a complex ornate handrail system. Grunau Metals also designed and installed elaborate metal architectural-class guardrails. The team also developed exterior ornamental glass-top canopies for all of the entryways and storefronts in the building.

GRUNAU METALS

RESULTS

Grunau Metals overcame the aggressive schedule and ongoing changes through research, leadership and close communication with other trades, the general contractor, and the building owner. Valuable working time was saved by X-raying the concrete at night, and by proactively working on all the stair towers at the same time which eliminated the need for a temporary structure. The building is a focal point of the community and has revitalized the area.

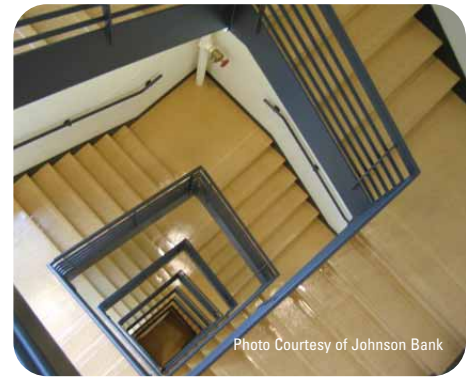


Photo Courtesy of Johnson Bank

The Grunau Metals team maintained a demanding schedule to construct four five-story stairwells in the building's three wings.

FROM THE CLIENT'S PERSPECTIVE:

"The Johnson Building is a reflection of how Grunau Metals consistently does business: focused on quality and respectful of our budget. It wasn't a surprise that the team did a great job."

Scott Weas, Owner's Representative for Johnson Bank — Weas Development

ABOUT GRUNAU METALS

Since 1977, the Grunau Metals team has been led by highly skilled professionals who specialize in metal fabrication. Our extremely versatile team prides itself on taking the time to understand your vision and bring your ideas to life. We put your interests first and offer complete service and cost-saving efficiencies.